



## Redefining Patient Recruitment: From Transactional to Trusted, Lasting Direct Relationships



ProSciento's Patient and Site Services (PSS) offers a comprehensive recruitment solution tailored to the evolving demands of today's clinical trials. By leveraging advanced analytics, behavioral insights, and a proprietary prescreening protocol, we deliver patient enrollment, retention outcomes, and site performance metrics that consistently exceed industry benchmarks.

**At the core of our success are our direct patient relationships and a trusted site network developed over more than 20 years as a leading clinical research organization for metabolic diseases.**

Our platform connects sponsors with a highly engaged, precisely targeted and consented patient database delivering significantly higher enrollment rates per site. Each participating site is a proven partner recognized for quality, expertise, and consistency.

### Direct-to-Patient Relationships

Delivering smarter recruitment, faster enrollment, and better retention

**1,700**  
prescreens  
per month

**25%**  
reduction in screen  
failure rates

**90%**  
on-time enrollment  
for early phase T2D &  
obesity clinical trials

**92%**  
study participant  
retention in clinical trials

### The Difference in Our Approach: Direct-to-Patient Relationships

We don't rely on outdated patient databases from labs or healthcare systems. Instead, our network is made up of individuals who've actively opted in to learn about and participate in clinical research. These are people, not data points—and we value and nurture those relationships deeply.

We leverage direct feedback from individuals in our database to help shape protocol design and ensure that studies are not only scientifically rigorous but also centered around patient needs. This alignment drives recruitment, boosts retention, and enhances study success.

### How Do Direct Patient Relationships Add Value?



#### Consented Patient Database

Real-world data and direct outreach connect us with research-ready individuals across diverse demographics.



#### Trusted Engagement

Longstanding patient relationships enable meaningful engagement and high retention.



#### Data-Driven Trial Design

Real-time and longitudinal data informs predictive modeling and study planning.



#### Smart Patient Matching

Automated tools align patients with studies using pre-screening and eligibility criteria.



#### Custom Insights

Targeted analytics inform recruitment and site selection strategy.

# Transforming Clinical Trial Enrollment with Real Patients and Real-World Data

*Read more about key differentiators of ProSciento's Patient and Site Services*

## Building Trust With Patients

### Reaching and Supporting Study Participants

Our omnichannel platform reaches patients through a wide network of digital and community partners, including a proprietary patient app, social media, advocacy groups, healthcare providers, and grassroots outreach initiatives. Concierge services—such as travel assistance, appointment reminders, and logistical support—make participation easier and help ensure a seamless experience from first contact to study completion.

### Listening to and Learning from Patients

Through ongoing patient polling, we gather insights into motivations and concerns that inform study design and outreach. This feedback fuels recruitment strategies that are relevant, respectful, and retention-focused.

### Diversity-Driven Enrollment

We prioritize inclusive representation across ethnicity, age, gender, and geography. Our outreach strategy is designed from the ground up to reflect the populations the therapy is intended to serve—helping sponsors meet regulatory expectations and achieve real-world relevance.

## Services to Maximize Enrollment & Address Barriers

### Precision Recruitment

We use data-driven patient profiling and hyper-targeted outreach to identify and engage individuals with a demonstrated interest in clinical research. Our proprietary algorithms match patients based on detailed medical, behavioral, demographic, and geographic criteria—enabling faster, more reliable enrollment.

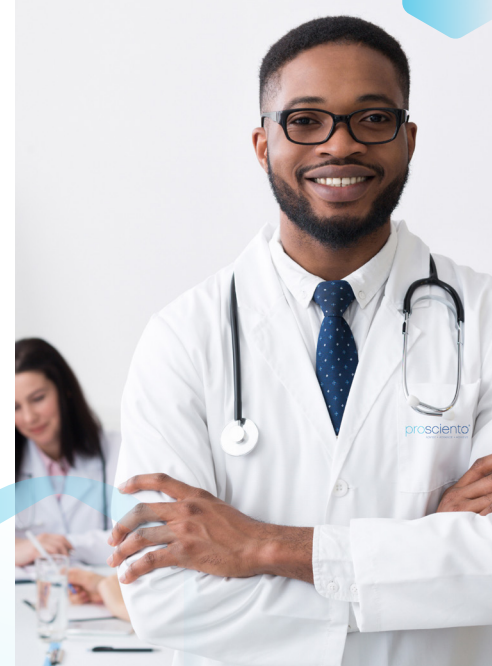
### Real-Time Insights and Actionable Data

Our Site Performance Portal provides centralized, real-time access to key recruitment metrics. Featuring dynamic dashboards, the portal enables coordinators, sponsors, and investigators to monitor enrollment progress, screen failure rates, and retention trends across all sites. It also identifies site-specific barriers and bottlenecks, allowing for timely, data-driven interventions before they affect study timelines.

### Enhancing Site Experience and Success

We strategically select sites from our trusted network based on proximity to eligible patients identified through centralized prescreening. Supporting site enrollment is a core principle of the Patient and Site Services (PSS) model. Each site is partnered with a dedicated coordinator who facilitates onboarding, recruitment, and patient engagement, while also streamlining communication between site staff and central teams. This collaborative approach improves response times, reduces administrative burden, and enhances protocol adherence—enabling sites to focus on high-quality patient care and achieving enrollment targets.

**“Our philosophy of treating patients as partners is fundamental to the important work we do for our sponsors. Sustainable recruitment begins with patient trust and ends with stronger, faster trial outcomes.”**



**Schedule a conversation with one of our team members at [BD@prosciento.com](mailto:BD@prosciento.com) to learn how PSS can support your upcoming clinical trial.**